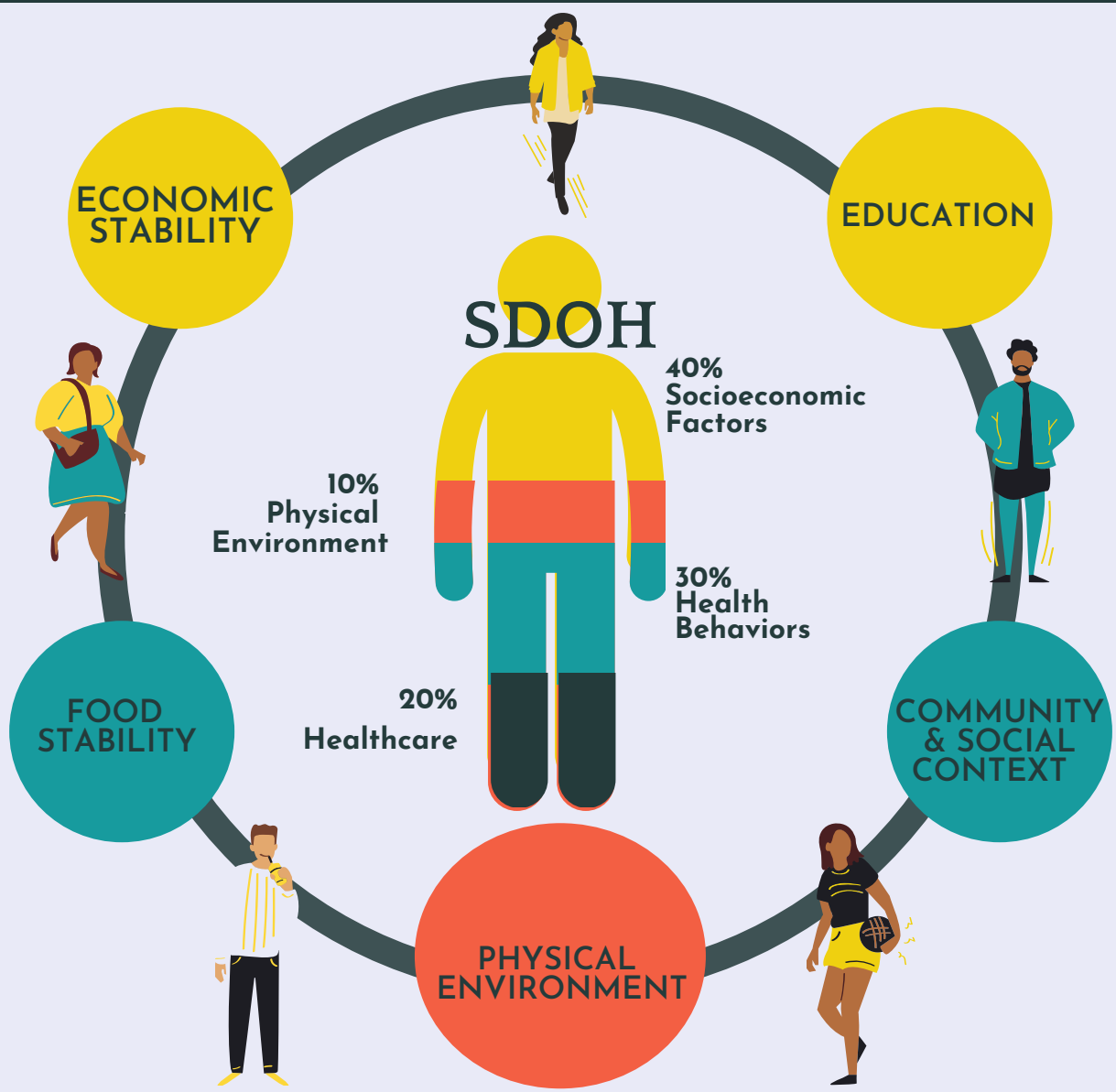


DOMAINS OF SOCIAL DETERMINANTS OF HEALTH



Studies suggest that 80-90% of health is determined by a person's social determinants of health, only 10-20% is accounted for by medical care. These social determinants can be categorized by the following domains.

ECONOMIC STABILITY

- Employment
- Debt
- Income
- Insurance
- Expenses
- Medical Bills

PHYSICAL ENVIRONMENT

- Housing
- Transportation
- Safety
- Parks
- Walkability

FOOD STABILITY

- Hunger
- Access to Healthy Food Options

EDUCATION

- Language
- Higher Education
- Literacy
- Early Childhood Education

Community & Social Context

- Social Integration
- Community Engagement
- Discrimination
- Stress

SDOH Teaching Points to Reinforce with a Learner

- SDOH should be a part of an expanded patient's social history
- SDOH domains should be considered in the patient's management, treatment & discharge plan



This JiTT is evidenced based
[Follow this link for more information](#)

